

FARUCI

LASER CLEANING MACHINE



FANUCI is a professional manufacturer of handheld laser welders and laser cleaning machines. Fanuci equipment is designed and manufactured in cooperation by Centrum Maszyn CNC and Creative Laser Technology Ltd

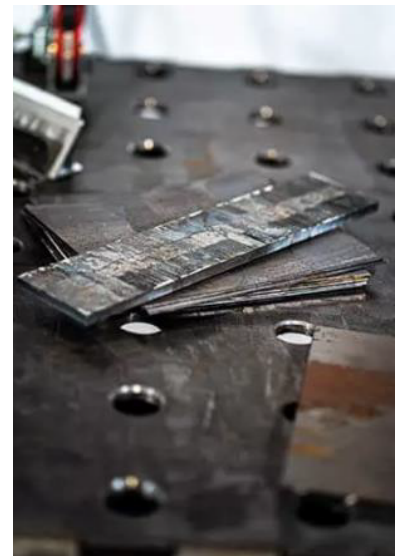
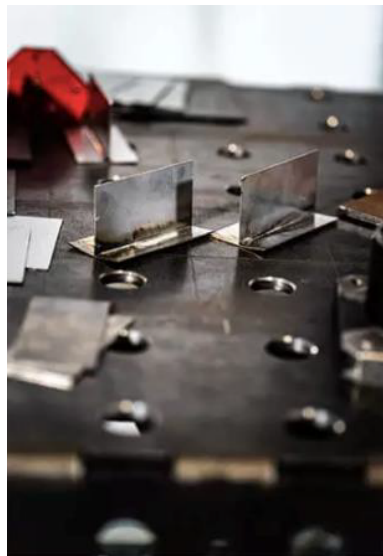
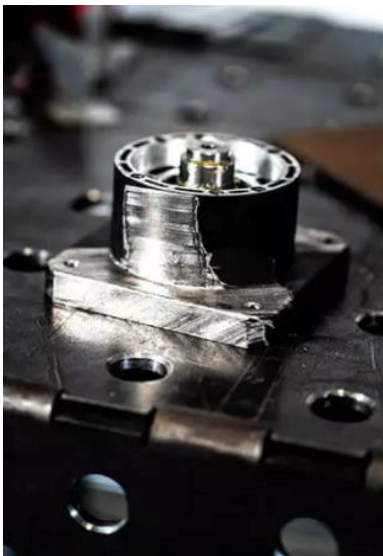
We have formed a complete laser cleaning equipment supplying platform: professional technical team, rich management experience, clear development direction, and we have also a huge number of software engineers, mechanical engineers, electrical engineers, industrial designers. All these ensure our rapid development in the laser industry.

FANUCI has a stable customer base and extensive technical recognition around the world. We master core technologies such as CNC system, precision cleaning head, etc., and achieve higher precision and faster speed of cleaning processing. The original wobble cleaning technology makes laser cleaning more widely used.

Key Features

- F • Non-contact cleaning, no damage to the processing part
- F • Easy operation, high efficiency, high stability, good cleaning effect
- F • High precision, cleaning by selecting the size on a precise position
- F • No need of chemical cleaning fluid, no consumables

Samples





No.	Components	Specification		
1	Machine Power	1000W	1500W	2000W
2	Laser wavelength	1070 nm	1070 nm	1070 nm
3	Fiber cable length	10M – 15M	10M – 15M	10M – 15M
4	Power consumption	7500W	10500W	14000W
5	Laser Gun	Pro Wobble with ajustable laser beam	Pro Wobble with ajustable laser beam	Pro Wobble with ajustable laser beam
6	Cooling	Water Cooling		
7	Water	Distilled water		
8	Touch screen	PLC screen and board		
9	Working temperature	5-40 °C		
10	Max Air Humidity	< 70%		

Major Components



▲ Laser source

Latest research and development of fiber laser by MAX Laser or IPG offer high photoelectric converting rate, improved beam quality, wide frequency modulation rate, intensified energy density, extended lifespan, stable performance, carefree maintenance, safety and reliability.



▲ PRO Wobble laser head

The laser cleaning machine is equipped with a proprietary, modern laser head with an adjustable beam system. It has a patented mechanism that drives the focusing lens to automatically change the position and the width of the beam.

The head is cooled by water to ensure a high stability, and the ergonomic design makes the operator safely and comfortably use the machine.



▲ Electrical components

All principal electrical components use France Schneider brand in compliance with CE



Fanuci LaserCLEAN is an operating system that combines high performance and ease of use. All control functions are placed on a colorful touch screen where we can set and change parameters depending on the user's needs.

The system can reserve the most used parameters on different materials and thickness to facilitate the operation.





Global customers are comfortable using their machines by our consumable supply and maintenance service. As per precision and complexity of the machine, customers are not recommended to conduct repair work if any occurrence of faults or stoppage. Please contact our after-sales team for proper handling promptly. On-site repair on laser source commenced by personnel or technician unauthorized will cause invalidation of warranty.

Our Commitment :

All requests and feedbacks will be responded within 24 hours.